

THE LIST

LAW FIRMS

Ranked by number of attorneys in L.A. County

► NEXT WEEK

The Largest Residential Brokerage Firms in L.A. County

THE PACESETTER: Lewis Brisbois Bisgaard & Smith is the largest law firm ranked by the number of attorneys in L.A. County with 277 attorneys in its downtown Los Angeles office. Founded in 1979, the firm has grown to more than 1,000 attorneys in 40 offices.

DEAL: Partners in the downtown Los Angeles office of Sheppard Mullin led the deal team that represented C.R. Laurence Co. in its \$1.3 billion acquisition by Oldcastle Building Envelope, a subsidiary of Irish building products giant CRH Group last year.

DOWNTOWN: Latham & Watkins downtown Los Angeles and Century City attorneys recently advised on notable corporate transactions for Hudson Pacific Properties, Legendary Pictures, Houlihan Lokey and Participant Media.

CHINA: O'Melveny & Myers represented Lions Gate Entertainment Corp. in its multiyear \$375 million co-financing deal with Hunan TV & Broadcast Intermediary Co. Ltd., a Chinese media and entertainment company, last year.

SALE: Kirkland & Ellis represented the Gores Group in its \$1.3 billion sale of Therakos to Mallinckrodt Enterprises last year.

Rank	Firm <ul style="list-style-type: none">nameaddresswebsite	L.A. Personnel <ul style="list-style-type: none">attorneyspartnersequity partners (current/year ago)	Financials ¹ <ul style="list-style-type: none">revenueprofits per partner (2015/2014)	Practice Areas (partial list)	Offices <ul style="list-style-type: none">year founded in L.A.no. offices (L.A./total)	Profile <ul style="list-style-type: none">headquarters cityexecutive director	Managing Partner(s) <ul style="list-style-type: none">namephone
1	Lewis Brisbois Bisgaard & Smith 633 W. Fifth St., Suite 4000 Los Angeles 90071 lewisbrisbois.com	277/277 185/184 45/42	WND WND	corporate, environmental, health care, intellectual property, labor and employment, litigation, real estate	1979 1/40	Los Angeles Robert Lewis	Timothy R. Graves (213) 250-1800
2	Gibson Dunn & Crutcher 333 S. Grand Ave. Los Angeles 90071 gibsondunn.com	259/261 73/76 N/A	WND/1,466 WND/3,042	antitrust, corporate, entertainment, labor and employment, litigation, real estate, white-collar crime	1890 2/18	N/A Charles Woodhouse	Christopher Chorba Amy Forbes (213) 229-7000
3	Sheppard Mullin 333 S. Hope St., 43rd Floor Los Angeles 90071 sheppardmullin.com	245/228 97/91 43/38	560/511 1,446/1,366	bankruptcy, corporate, entertainment, intellectual property, labor and employment, litigation, real estate	1927 2/15	Los Angeles Ted Tinson	Whitney Roy David Garcia Derek Havel (213) 620-1780
4	Latham & Watkins 355 S. Grand Ave. Los Angeles 90071 lw.com	234/221 68/70 N/A	2,650/2,612 2,908/2,901	corporate, environmental, finance, litigation, tax, bankruptcy, entertainment, intellectual property, M&A, white-collar crime	1934 2/32	N/A Eric Goldreich	Jeffrey B. Greenberg (213) 485-1234
5	O'Melveny & Myers 400 S. Hope St. Los Angeles 90071 omm.com	208/222 57/60 WND	WND/665 WND/1,590	antitrust, bankruptcy, corporate, entertainment, environmental, health care, intellectual property	1885 2/15	N/A George Demos	John-Paul Motley Bo Pearl (213) 430-6000
6	Munger Tolles & Olson 355 S. Grand Ave., 35th Floor Los Angeles 90071 mto.com	173/165 72/70 72/70	WND/266 WND/1,900	class actions, privacy and data security, antitrust, corporate, entertainment, intellectual property, labor and employment, litigation	1962 1/2	Los Angeles Larry Kleinberg	Sandra A. Seville-Jones Brad D. Brian (213) 683-9100
7	Sidley Austin 555 W. Fifth St. Los Angeles 90013 sidley.com	168/147 71/65 WND	WND/1,753 WND	litigation, real estate, white collar, corporate, labor & employment, product liability, bankruptcy, entertainment, M&A	1980 2/19	Chicago Shawn Derfer	Michael Kelley Dan Clivner (213) 896-6000
8	Manatt Phelps & Phillips 11355 W. Olympic Blvd. Los Angeles 90064 manatt.com	155/159 89/97 32/35	324/305 1,380/1,245	entertainment, environmental, health care, intellectual property, litigation, M&A, real estate	1965 1/8	Los Angeles Edith Gould	William Quicksilver (310) 312-4000
9	Seyfarth Shaw 2029 Century Park East, Suite 3500 Los Angeles 90067 seyfarth.com	139/146 61/60 23/22	WND/555 WND	environmental, bankruptcy, corporate, intellectual property, labor and employment, litigation, real estate	1973 2/14	Chicago N/A	Laura Wilson Shelby Richard Mendelson Aaron Lubeley (310) 277-7200
10	Quinn Emanuel Urquhart & Sullivan 865 S. Figueroa St., 10th Floor Los Angeles 90017 quinnemanuel.com	133/142 62/60 44/45	WND/1,104 WND/4,923	antitrust, bankruptcy, entertainment, intellectual property, litigation, technology, white-collar crime	1986 1/18	Los Angeles Richard Schirtzer	John B. Quinn (213) 443-3000
11	Paul Hastings 515 S. Flower St. Los Angeles 90071 paulhastings.com	129/120 44/44 28/31	WND/1,000 WND/2,360	corporate, environmental, intellectual property, labor and employment, litigation, real estate	1951 1/20	Los Angeles Tim Wright	Greg Nitzkowski Elena Baca (213) 683-6000
12	Loeb & Loeb 10100 Santa Monica Blvd., Suite 2200 Los Angeles 90067 loeb.com	122/119 70/68 30/30	WND WND	corporate, entertainment, intellectual property, litigation, real estate, tax, technology	1909 1/7	N/A Alan Cutler	Craig Emanuel (310) 282-2000
13	Reed Smith 355 S. Grand Ave. Los Angeles 90071 reedsmith.com	114/124 52/53 24/25	WND/1,151 WND/1,203	financial services, litigation, healthcare, labor and employment, entertainment, tax, corporate	1990 2/25	N/A Michael Thometz	John M. Iino Stuart Shanus (213) 457-8000
14	Irell & Manella 1800 Avenue of the Stars, Suite 900 Los Angeles 90067 irell.com	103/109 34/34 34/34	WND/248 WND/3,625	debt finance, corporate, entertainment, intellectual property, litigation, tax, technology	1941 1/2	Los Angeles Mark Hanson	Andrei Iancu (310) 277-1010
15	Skadden Arps Slate Meagher & Flom 300 S. Grand Ave. Los Angeles 90071 skadden.com	99/97 23/26 23/26	WND WND	entertainment, bankruptcy, corporate, litigation, M&A, real estate, tax, white-collar crime	1983 1/23	New York N/A	Brian J. McCarthy (213) 687-5000
16	Mitchell Silberberg & Knupp 11377 W. Olympic Blvd. Los Angeles 90064 msk.com	97/NA 56/NA 44/NA	WND WND	corporate, entertainment, intellectual property, labor and employment, litigation, tax	1908 1/3	Los Angeles Thomas Edwards	Kevin Gaut (310) 312-2000
17	Morgan Lewis & Bockius 300 S. Grand Ave., 22nd Floor Los Angeles 90071 morganlewis.com	97/106 38/41 WND	WND WND	securities and corporate governance matters, energy and infrastructure finance, insurance coverage and health care litigation, class actions	1976 2/28	N/A Natasha von Rathjen	David L. Schrader Raymond Rothman (213) 612-2500
18	Atkinson Andelson Loya Ruud & Romo 12800 Center Court Drive, Suite 300 Cerritos 90703 aalrr.com	96/87 51/45 20/20	WND WND	labor and employment, education, construction, business and tax, cities, litigation, antitrust, bankruptcy, white-collar crime	1979 2/8	Cerritos Marilyn Philipp	Mark T. Palin (562) 653-3200
19	Kirkland & Ellis 333 S. Hope St. Los Angeles 90071 kirkland.com	93/84 44/41 WND	WND WND	corporate, entertainment, intellectual property, litigation, M&A, tax, white-collar crime	1989 1/12	N/A Cynthia Barnes	Mark C. Holscher (213) 680-8400
20	Buchalter Nemer 1000 Wilshire Blvd., Suite 1500 Los Angeles 90017 buchalter.com	92/85 50/44 48/44	WND WND	banking and finance, bankruptcy, corporate, entertainment, health care, intellectual property, litigation	1948 1/5	Los Angeles Jonathan Hawkins	Adam J. Bass (213) 891-0700

¹ Firmwide revenue in millions. Firmwide profits per partner in thousands.
N/A - Not Applicable WND - Would Not Disclose
Note: The information on this list was provided by representatives of the firms. Firms are ranked by the number of attorneys and partners in L.A. County offices, respectively. To the best of our knowledge, this information is accurate as of press time. While every effort is made to ensure the accuracy and thoroughness of the list, omissions and typographical errors sometimes occur. Please send corrections or additions on company letterhead to the Research Department, Los Angeles Business Journal, 5700 Wilshire Blvd., Suite 170, Los Angeles 90036. ©2016 Los Angeles Business Journal. This list may not be reprinted in whole or in part without prior written permission from the editor. Reprints are available from the YGS Group, (800) 290-5460 ext. 100.

Researched by David Nusbaum

Continued on page A4

SheppardMullin

Representative 2015 Transactions

 <p>Diodes Inc. acquisition of Pericom Semiconductor Corporation and related acquisition financing</p>	 <p>C.R. Laurence Co., Inc. sale to Oldcastle Building Envelope, a U.S. subsidiary of CRH plc</p>	 <p>Monte Nido Holdings, LLC sale of equity to Levine Leichtman Capital Partners</p>	 <p>Novetta Solutions, LLC sale to The Carlyle Group (NASDAQ: CG)</p>	 <p>Lionsgate Entertainment acquisition of Pilgrim Studios</p>	 <p>Sundial Brands strategic partnership with Bain Capital Private Equity</p>	 <p>Ingram Micro Inc. acquisition of Odin Service Automation</p>	 <p>Molina Healthcare acquisition of the behavioral health services segment of Providence Service Corporation</p>
 <p>Press Forge Company sale to Precision Castparts Corp.</p>	 <p>alphabroder acquisition of Bodek and Rhodes, Inc.</p>	 <p>Seven Mile Capital Partners LLC acquisition of Huron Inc.</p>	 <p>TeraLogics, LLC sale to Cubic Corporation (NYSE:CUB)</p>	 <p>Bison Capital Partners investments in CVE Technology Group, Inc., Lime Energy Co. and Indie Semiconductor</p>	 <p>Benchmark Electronics, Inc. (NYSE: BHE) acquisition of SCS Secure Holdings LLC</p>	 <p>Karga Seven Pictures acquisition by Red Arrow Entertainment Group</p>	 <p>Global Eagle Entertainment Inc. acquisitions of MasFlight and NavAero</p>
 <p>LendingTree, Inc. (NASDAQ: TREE) public offering of common stock</p>	 <p>ZMC Hotels, Inc. sale of hotel portfolio</p>	 <p>Encell Technologies, Inc. convertible note financings</p>	 <p>Diageo plc (NYSE: DEO) sale of its wine business to Treasury Wine Estates</p>	 <p>Lex Machina, Inc. acquisition by RELX US Holdings, Inc.</p>	 <p>Gramercy Risk Capital formation of a joint venture investment vehicle</p>	 <p>Entwine LLC and Entwine AG acquisition by Extron Electronics</p>	 <p>Medfocus Radiology Network sale to One Call Care Management</p>
 <p>Samsung Venture Investment Corporation investments in nuTonomy, Jukin Media, and Filament</p>	 <p>Relativity Media, LLC Joint Venture with B4U and sale of television division</p>	 <p>First Foundation Initial Public Offering</p>	 <p>Innovational Funding Holdings, Inc. convertible note financing</p>	 <p>Marina Del Rey Hospital sale to Cedars-Sinai Health System</p>	 <p>Estate Assist, Inc. sale to DocuSign</p>	 <p>People Power Company Series B preferred financing</p>	 <p>Wencor, LLC acquisition of Silver Fox Services, Inc.</p>
 <p>Saffron Technology, Inc. merger with Intel Corporation</p>	 <p>Skalli Corporation dba St. Supéry Estate Vineyards and Winery acquisition by Chanel, Inc.</p>	 <p>Hello Giggles, Inc. merger with a wholly-owned subsidiary of Time, Inc.</p>	 <p>New Enterprise Associates LP investment in Goop International Holdings Inc.</p>	 <p>Northwest Tucson Emergency Physicians acquisition by EmCare</p>	 <p>Temple Turmeric, Inc. Series A convertible note financing</p>	 <p>Visalia Medical Clinic, Inc. affiliation with the Kaweah Delta Medical Foundation</p>	 <p>PPG Industries Europe acquisition of Revcoat, Inc. U.S. Counsel</p>
 <p>HealthLoop, Inc. preferred equity financing</p>	 <p>AMN Healthcare acquisition of The First String Healthcare, Inc.</p>	 <p>Hydra Ventures investment Series A financing of Storelli Sports</p>	 <p>WestStar Mortgage, Inc. sale to JG Wentworth Company (NYSE: JGW)</p>	 <p>Synthicity, LLC sale of assets to Autodesk, Inc.</p>	 <p>Banijay Group acquisition of a controlling interest in Stephen David Entertainment</p>	 <p>Federal Resources Supply Company MBO and sale of minority interest to Alaris USA Inc.</p>	 <p>Walz Group, LLC reverse triangular merger with LenderLive Services, LLC</p>
 <p>Marketing Software Company, LLC sale of equity to Valid USA, Inc.</p>	 <p>Nanomaterial Diagnostics, Inc. Series A financing</p>	 <p>AITV investments in HyTrust, Zanbato, Bat Blue and Fanbread</p>	 <p>E & J Gallo acquisition of the assets of J Vineyards and Winery</p>	 <p>J. E. DeWitt, Inc. asset sale to Southern Counties Oil Co.</p>	 <p>Signet Healthcare Partners follow-on offering of Pfenex Inc.</p>	 <p>Stearns Holding, LLC sale of a majority stake to Blackstone</p>	 <p>Wencor, LLC acquisition of PHS/MWA</p>
 <p>Machinima, Inc. bridge note financing</p>	 <p>Celerity Partners joint venture investment in 360 PT Management, LLC and related debt financing</p>	 <p>ITE Group PIPE transaction U.S. securities counsel</p>	 <p>SourceCode Technology Holdings, Inc. sale of Series C preferred stock</p>	 <p>Digital Voice Systems, Inc. sale of assets to Avtex Solutions, LLC</p>	 <p>Fosun Pharmaceutical Development Co., Ltd. investment in Sovereign Medical Services, Inc.</p>	 <p>Excel Anesthesia sale to US Anesthesia Partners</p>	 <p>Iron Data Solutions, LLC acquisition of MicroPact, Inc.</p>
 <p>Performance Team Freight Systems, Inc. Recapitalization</p>	 <p>Mobile Motion, LLC sale of membership interests</p>	 <p>Ad Exchange Group, LLC redemption of members' equity interests</p>	 <p>Party Ventures sale of World Poker Tour business to Ourgame U.S. Counsel</p>	 <p>ThreatSTOP, Inc. Series B preferred stock financing</p>	 <p>Scottsdale Emergency Associates, Ltd. acquisition by affiliates of EmCare/Envision Healthcare</p>	 <p>DJO Global, Inc. acquisition of assets from Zimmer Biomet Holdings Inc.</p>	 <p>Universal Protection Service sale of equity to Warburg Pincus and purchase of Guardsmark, LLC</p>
 <p>South Denver Anesthesiologists, P.C. partnership with U.S. Anesthesia Partners</p>	 <p>Caltius Partners acquisition of World Class Technology Corporation</p>	 <p>Fosun Industrial Co., Ltd. investment in Amerigen Pharmaceuticals Ltd. and Genefirst Limited</p>	 <p>Principal's Exchange LLC sale of equity interests to PE Acquisition, Inc.</p>	 <p>ProHealth Physicians reverse triangular merger with Collaborative Care Holdings, LLC</p>	 <p>Celigo, Inc. Series A preferred stock financing</p>	 <p>Nipro Corporation acquisition of Infraredx, Inc.</p>	 <p>Tullett Prebon acquisition of MOAB Oil, Inc.</p>

LAW FIRMSContinued from page A2

Rank	Firm <ul style="list-style-type: none">nameaddresswebsite	L.A. Personnel <ul style="list-style-type: none">attorneyspartnersequity partners(current/year ago)	Financials ¹ <ul style="list-style-type: none">revenueprofits per partner(2015/2014)	Practice Areas (partial list)	Offices <ul style="list-style-type: none">year founded in L.A.no. offices (L.A./total)	Profile <ul style="list-style-type: none">headquarters cityexecutive director	Managing Partner(s) <ul style="list-style-type: none">namephone
21	Glaser Weil 10250 Constellation Blvd., 19th Floor Los Angeles 90067 glaserweil.com	92/101 49/43 18/18	WND WND	corporate, entertainment, environmental, intellectual property, litigation, real estate, tax	1988 2/5	Los Angeles Allen Gilbert	Peter M. Weil (310) 553-3000
22	Manning & Kass Ellrod Ramirez Trester 801 S. Figueroa St., 15th Floor Los Angeles 90017 manningllp.com	92/92 36/31 14/14	WND WND	corporate, labor and employment, workers' compensation, governmental liability, premises liability, litigation	1994 1/6	Los Angeles Robert Santos	Steven D. Manning (213) 624-6900
23	Allen Matkins Leck Gamble Mallory & Natsis 515 S. Figueroa St., Ninth Floor Los Angeles 90071 allenmatkins.com	84/83 49/50 35/39	152/152 910/852	bankruptcy, corporate, environmental, labor and employment, litigation, real estate, tax, venture capital	1977 2/5	Los Angeles Ralph Allen	David L. Osias (213) 622-5555
24	Greenberg Glusker 1900 Avenue of the Stars, 21st Floor Los Angeles 90067 greenbergglusker.com	84/84 48/48 34/34	WND WND	real estate, entertainment, corporate, trusts and estates, employment, environment, intellectual property	1959 1/1	Century City Kimberly Lahs	Bob Baradaran (310) 553-3610
25	Littler 2049 Century Park East, Fifth Floor Los Angeles 90067 littler.com	84/82 38/39 30/30	WND WND	labor and employment	1980 2/74	San Francisco David Marcum	Robert S. Blumberg (310) 553-0308
26	Cox Castle & Nicholson 2029 Century Park East, Suite 2100 Los Angeles 90067 coxcastle.com	83/78 47/46 46/45	WND WND	finance, bankruptcy, corporate, environmental, labor and employment, litigation, real estate, tax	1968 1/3	Los Angeles Edward Brose	Management Committee (310) 284-2200
27	Jones Day 555 S. Flower St., 50th Floor Los Angeles 90071 jonesday.com	83/77 36/37 N/A	WND WND	cybersecurity & data privacy, construction, insurance recovery, antitrust, bankruptcy, litigation, white-collar crime	1973 1/43	N/A Lisa Takata	Brian A. Sun (213) 489-3939
28	Greenberg Traurig 1840 Century Park East, Suite 1900 Los Angeles 90067 gtlaw.com	81/87 46/44 N/A	1,322/1,271 1,473/1,424	entertainment and media, corporate and securities, litigation, real estate, intellectual property, labor and employment	2000 1/38	N/A Jim Burns	Jeff E. Scott (310) 586-7700
29	Jeffer Mangels Butler & Mitchell 1900 Avenue of the Stars, Seventh Floor Los Angeles 90067 jmbm.com	80/80 51/50 WND	WND WND	hospitality, corporate, intellectual property, labor and employment, litigation, real estate, tax	1981 1/3	Los Angeles Ron Avenida	Bruce P. Jeffer (310) 203-8080
30	Proskauer Rose 2049 Century Park East, Suite 3200 Los Angeles 90067 proskauer.com	80/87 32/33 28/29	822/818 2,150/2,100	capital markets, trusts & estates, private equity, entertainment, labor and employment, litigation, M&A, real estate, tax	1979 1/13	New York Arthur Gurwitz	Michael A. Woronoff (310) 557-2900
31	Morrison & Foerster 707 Wilshire Blvd. Los Angeles 90017 mofo.com	80/79 26/28 WND	WND/968 WND/1,417	corporate, environmental, intellectual property, labor and employment, litigation, real estate, white-collar crime	1974 1/17	N/A N/A	David McDowell (213) 892-5200
32	Pillsbury Winthrop Shaw Pittman 725 S. Figueroa St., Suite 2800 Los Angeles 90017 pillsburylaw.com	79/63 42/35 WND	WND WND	antitrust, bankruptcy, corporate, entertainment, environmental, intellectual property, litigation	1929 1/18	N/A Melissa Eurton	William S. Waller (213) 488-7100
33	Alston & Bird 333 S. Hope St., 16th Floor Los Angeles 90071 alston.com	78/73 36/37 18/18	WND WND	corporate, environmental, intellectual property, labor and employment, litigation, real estate, technology	2008 1/10	Atlanta Wayne Mitchell	Thomas Wingard (213) 576-1000
34	Arent Fox 555 W. Fifth St., 48th Floor Los Angeles 90013 arentfox.com	77/82 28/30 19/21	WND WND	bankruptcy, entertainment, health care, intellectual property, labor and employment, litigation, white-collar crime	2007 1/4	Washington, D.C. Kimberly Harrell	Aaron Jacoby (213) 629-7400
35	Liner 1100 Glendon Ave., 14th Floor Los Angeles 90024 linerlaw.com	74/65 39/30 39/30	WND WND	insurance recovery, bankruptcy, corporate, entertainment, intellectual property, litigation, real estate	1996 2/3	Los Angeles Candia Shaffer	Stuart A. Liner (310) 500-3500
36	Akin Gump Strauss Hauer & Feld 2029 Century Park East, Suite 2400 Los Angeles 90067 akingump.com	74/69 22/22 22/22	930/868 1,917/1,885	project finance, bankruptcy, entertainment, labor and employment, litigation, M&A, real estate	1997 1/21	N/A Lisa Ford	C.N. Franklin Reddick III (310) 229-1000
37	Dentons US 601 S. Figueroa St., 25th Floor Los Angeles 90017 dentons.com	73/32 36/16 28/5	WND/482 WND/1,003	insurance, franchise, class action, environmental, private equity, M&A, commercial real estate	1990 2/120	N/A Janice Moore	Darry A. Sragow (213) 623-9300
38	Katten Muchin Rosenman 2029 Century Park East, Suite 2600 Los Angeles 90067 kattenlaw.com	72/77 36/36 18/22	WND WND	corporate, entertainment, environmental, intellectual property, litigation, real estate	1989 2/13	Chicago Tanya Russell	Zia Modabber (310) 788-4400
39	Venable 2049 Century Park East, Suite 2100 Los Angeles 90067 venable.com	72/61 25/24 15/16	477/442 1,063/968	bankruptcy, corporate, entertainment, intellectual property, labor and employment, litigation, real estate, tax	2006 1/9	Washington, D.C. N/A	Mitchell Evall (310) 229-9900
40	Milbank Tweed Hadley & McCloy 601 S. Figueroa St., 30th Floor Los Angeles 90017 milbank.com	72/77 20/21 19/20	WND WND	bankruptcy, corporate, intellectual property, litigation, M&A, tax, technology, venture capital	1987 1/12	New York Erica Tambllyn	Paul S. Aronzon Mark C. Scarsi (213) 892-4000

¹ Firmwide revenue in millions. Firmwide profits per partner in thousands.
N/A - Not Applicable WND - Would Not Disclose
Note: The information on this list was provided by representatives of the firms themselves. Law firms are ranked by the number of attorneys and partners in L.A. County offices, respectively. To the best of our knowledge, this information is accurate as of press time. While every effort is made to ensure the accuracy and thoroughness of the list, omissions

and typographical errors sometimes occur. Please send corrections or additions on company letterhead to the Research Department, Los Angeles Business Journal, 5700 Wilshire Blvd., Suite 170, Los Angeles 90036. ©2016 Los Angeles Business Journal. This list may not be reprinted in whole or in part without prior written permission from the editor. Reprints are available from the YGS Group, (800) 290-5460 ext. 100.

Researched by David Nusbaum

Green Hasson Janks



Great things happen when people collaborate

Build Your Future With Us

Green Hasson Janks is more than just an accounting firm. We are your trusted advisor.

Growing your business requires both collaboration and strategic planning. We help transform your vision to measurable results.

To learn how Green Hasson Janks can position you for future success, visit greenhassonjanks.com or call 310.873.1600.

GreenHassonJanks.com

Green Hasson Janks provides assurance, tax, participations, royalty and business advisory consulting to forward-thinking, entrepreneurial organizations.

LAW FIRMSContinued from page A4

SECURITIES: Lawyers in DLA Piper's Los Angeles offices won a motion to dismiss a securities fraud class action brought in the Central District of California against investment bank MDB Capital Group.

WILL: In August, attorneys at Holland & Knight successfully obtained admission of Mickey Rooney's last will to probate over a challenge filed by seven of his eight natural children.

Passing Marks
The number of attorneys admitted to the California State Bar fell sharply last year.

Year	Attorneys Admitted
'11	6,600
'12	6,900
'13	7,000
'14	6,650
'15	6,150

Source: California State Bar

Rank	Firm <ul style="list-style-type: none">nameaddresswebsite	L.A. Personnel <ul style="list-style-type: none">attorneyspartnersequity partners (current/year ago)	Financials ¹ <ul style="list-style-type: none">revenueprofits per partner (2015/2014)	Practice Areas (partial list)	Offices <ul style="list-style-type: none">year founded in L.A.no. offices (L.A./total)	Profile <ul style="list-style-type: none">headquarters cityexecutive director	Managing Partner(s) <ul style="list-style-type: none">namephone
41	Orrick Herrington & Sutcliffe 777 S. Figueroa St., Suite 3200 Los Angeles 90017 orrick.com	72/70 18/21 WND	WND/\$877 WND/\$1,598	antitrust, corporate, entertainment, intellectual property, labor and employment, litigation, real estate	1985 1/25	San Francisco Nanci Kawa	Michael A. McAndrews (213) 629-2020
42	Public Counsel 610 S. Ardmore Ave. Los Angeles 90005 publiccounsel.org	71/75 WND WND	WND WND	appellate law, children's rights, community development, consumer law, education rights, litigation	1970 5/6	Los Angeles N/A	Margaret Morrow (213) 385-2977
43	McGuireWoods 1800 Century Park East, Eighth Floor Los Angeles 90067 mcguirewoods.com	69/68 19/19 WND	WND WND	health care, labor and employment, litigation, M&A, real estate, venture capital, white-collar crime	2005 2/19	N/A John Kramer	Richard Grant Greg Evans (310) 315-8200
44	Musick Peeler & Garrett 1 Wilshire Blvd., Suite 2000 Los Angeles 90017 musickpeeler.com	67/62 WND WND	WND WND	antitrust, bankruptcy, corporate, environmental, health care, intellectual property, labor and employment, litigation	1954 1/6	Los Angeles Robert Muse	R. Joseph De Briyn (213) 629-7600
45	Winston & Strawn 333 S. Grand Ave. Los Angeles 90071 winston.com	66/63 26/27 19/18	818/786 WND/1,685	corporate, energy, intellectual property, litigation, M&A/private equity, restructuring and insolvency	1999 1/18	N/A James Schwarz	Eric Sagerman (213) 615-1700
46	Gordon & Rees 633 W. Fifth St., 52nd Floor Los Angeles 90071 gordonrees.com	65/57 23/21 5/5	277/246 WND	commercial litigation, insurance coverage/litigation, labor and employment, white-collar crime	1998 1/37	San Francisco Susan Friedman	Peter Schwartz (213) 576-5000
47	McDermott Will & Emery 2049 Century Park East, 38th Floor Los Angeles 90067 mwe.com	61/61 38/38 19/20	892/900 1,580/1,529	corporate, health care, intellectual property, litigation, real estate, tax, white-collar crime	1987 1/20	Chicago Joan Schulman	Eric Gordon (310) 277-4110
48	Davis Wright Tremaine 865 S. Figueroa St., Suite 2400 Los Angeles 90017 dwt.com	59/55 31/29 18/17	WND WND	bankruptcy, entertainment, health care, intellectual property, labor and employment, litigation, real estate	1989 1/9	Seattle N/A	Mary Haas (213) 633-6800
49	DLA Piper 550 S. Hope St. Los Angeles 90071 dlapiper.com	59/56 25/22 25/22	WND/2,481 WND/1,490	securities litigation, white-collar crime, privacy rights consumer class action, patent/intellectual property, commercial litigation	2001 2/92	N/A Ronnie DeCesare	Perrie Weiner Jackie Park (213) 330-7700
50	Richards Watson & Gershon 355 S. Grand Ave., 40th Floor Los Angeles 90071 rwglaw.com	55/53 35/37 N/A	WND WND	government, public finance, water rights, environmental, labor and employment, litigation, real estate	1954 1/4	Los Angeles Lena Goff	Kayser O. Sume (213) 626-8484
51	Jackson Lewis P.C. 725 S. Figueroa St., Suite 2500 Los Angeles 90017 jacksonlewis.com	55/54 27/27 15/15	407/368 600/510	labor and employment	1977 1/57	White Plains, N.Y. N/A	Mia Farber (213) 689-0404
52	Bryan Cave 120 Broadway, Suite 300 Santa Monica 90401 bryancave.com	55/65 18/22 WND	WND WND	international trade, franchise, bankruptcy, corporate, labor and employment, litigation, real estate	1979 1/26	N/A Delaram Brown	Jennifer Jackson (310) 576-2100
53	Tharpe & Howell 15250 Ventura Blvd., Ninth Floor Sherman Oaks 91403 tharpe-howell.com	55/56 9/9 WND	WND WND	labor and employment, insurance defense, workers' compensation defense, bad faith and coverage, real estate and construction law	1977 1/7	Sherman Oaks N/A	Stephanie Forman (818) 205-9955
54	Holland & Knight 400 S. Hope St. Los Angeles 90071 hklaw.com	54/52 23/22 5/6	744/689 1,249/1,133	commercial litigation, Native American law, labor and benefits, real estate structured finance, trusts, estates, white collar defense and investigations	2000 1/26	Miami N/A	Joel M. Athey (213) 896-2400
55	Morris Polich & Purdy 1055 W. Seventh St., Suite 2400 Los Angeles 90017 mpplaw.com	51/52 28/25 12/14	WND WND	appellate, insurance, construction, products liability, privacy and data security, environmental, health care	1969 1/4	Los Angeles Ken Sweet	Donald Ridge (213) 891-9100
56	Wilson Elser 555 S. Flower St., Suite 2900 Los Angeles 90071 wilsonelser.com	51/50 25/25 13/12	WND WND	entertainment, environmental, health care, intellectual property, labor and employment, litigation, technology	1979 1/31	New York Ruben Silva	David S. Eisen (213) 443-5100
57	Perkins Coie 1888 Century Park East, 17th Floor Los Angeles 90067 perkinscoie.com	51/54 19/21 4/6	749/710 1,100/1,095	product liability, corporate, entertainment, intellectual property, labor and employment, litigation, real estate	1988 1/19	Seattle Rod Wall	Ron McIntire (310) 788-9900
58	Ervin Cohen & Jessup 9401 Wilshire Blvd., Ninth Floor Beverly Hills 90212 ecjlaw.com	50/47 35/34 WND	WND WND	bankruptcy, corporate, health care, intellectual property, labor and employment, litigation, real estate, tax	1953 1/1	Beverly Hills Michael Kosiba	Barry J. MacNaughton (310) 273-6333
59	Hinshaw & Culbertson 11601 Wilshire Blvd., Suite 800 Los Angeles 90025 hinshawlaw.com	50/53 31/32 14/15	277/211 WND	professional liability defense, health, life and disability litigation, insurance regulatory, labor and employment	2002 2/25	Chicago Paul Boken	Desmond Hinds Jr. Richard De La Mora (310) 909-8000
60	Norton Rose Fulbright 555 S. Flower St., 41st Floor Los Angeles 90071 nortonrosefulbright.com	50/48 22/20 22/20	WND WND	public finance, environmental, commercial litigation, labor and employment, corporate, intellectual property	1989 1/55	Houston Lynne Stevens	Peter Mason (213) 892-9200

¹ Firmwide revenue in millions. Firmwide profits per partner in thousands.
N/A - Not Applicable WND - Would Not Disclose
Note: The information on this list was provided by representatives of the firms. Firms are ranked by the number of attorneys and partners in L.A. County offices, respectively. To the best of our knowledge, this information is accurate as of press time. While every effort is made to ensure the accuracy and thoroughness of the list, omissions and typographical

errors sometimes occur. Please send corrections or additions on company letterhead to the Research Department, Los Angeles Business Journal, 5700 Wilshire Blvd., Suite 170, Los Angeles 90036. ©2016 Los Angeles Business Journal. This list may not be reprinted in whole or in part without prior written permission from the editor. Reprints are available from the YGS Group, (800) 290-5460 ext. 100.

Researched by David Nusbaum

ADVERTISEMENT

GIRARDI | KEESE LAWYERS



A decorated 20 year veteran Sargent with the Newport Beach Police Department testifies for another officer in a discrimination case in the same department, identifying superior officers. Not long after, a course of harassment against that same Sargent commences.

His wife, a civilian dispatcher for the same department also becomes the object of scorn. A random audit of the Sargent's computer yields inappropriate computer use and leads to a demotion. At the Civil Service hearing challenging the demotion, the Chief of the police department speculates about wife-swapping leading to a public confrontation between the wife and the Chief. Soon after, further computer misuse is identified and the Sargent is terminated. Nine months later so, too, is the wife. During the course of discovery, extensive Pitchess motions revealed considerable unprofessional conduct of other officers who were not demoted. The cases proceeded in two different trials when the Court refused to consolidate. No offers were made and trial commenced. After three weeks of trial in Orange County Superior Court with co-counsel Melanie R. Savarese and Lawrence J. Lennemann, settlement (of \$500,000.00) is achieved. The employment case with everything.



After cutting his legal teeth in medical malpractice actions, Jim O'Callahan became interested in the interplay between the practice of medicine and medical devices and pharmaceutical products. He now devotes a substantial portion of his practice to pursuing the manufacturers of defective drugs and defective medical products.

O'Callahan is currently pursuing cases against the makers of defective hip implants and surgical devices, including robots used to perform invasive surgery and extract organs and tissue. He is also handling cases involving epidural catheters and endotracheal tubes.

Following his lay role in the Vioxx litigation, O'Callahan now serves on the California Steering Committees for the Risperdal litigation and the Actos litigation. Risperdal is a drug that was marketed for "off label" use and resulted in adolescent boys developing gynecomastia. Actos, a Type II diabetes medication, caused some users to develop bladder cancer.

O'Callahan also spearheaded the firm's successful efforts to keep open the long-term care unit at the Motion Picture and Television Fund facility in Woodland Hills. The firm worked with residents and their families to insure that the MPTF stayed true to its historical mission and that the facility survived to serve those affiliated with the industry.

Bryan Stow v. Los Angeles Dodgers



On March 31, 2011, Bryan Stow was viciously attacked by two Dodgers fans in the Los Angeles Dodgers parking lot after attending the Opening Day game pitting the Dodgers against their rival, the San Francisco Giants. Bryan Stow's injuries from this attack left him permanently impaired. The Girardi & Keese trial team consisting of Thomas V. Girardi, David R. Lira, Chris

Aumais and Nicole DeVanon brought suit on behalf of Bryan Stow against the Los Angeles Dodgers and its then owner, Frank McCourt. The complaint alleged that delays and gaps in security deployment allowed the two attackers to not only to assault Mr. Stow, but other Giants' fans during and after the game. The evidence showed that the two off-duty police officers assigned the lot where Bryan Stow was attacked did not arrive in the parking lot until thirty minutes after the attack on Bryan Stow had occurred.

After five weeks of trial and testimony from fifty-six witnesses, the jury found in favor of Bryan Stow and rendered a verdict against the Dodgers in the sum of \$13,901,738.00. This verdict is significant as no jury in California has held a professional sporting team liable under a premises liability theory in decades. Further, after the verdict, other professional sports stadium owners contacted Girardi & Keese for ideas to improve fan safety at sporting events. Mr. Lira is a member of the American Board of Trial Advocates and the International Academy of Trial Lawyers which are invitation-only trial lawyer organizations.



Amy Solomon is Girardi Keese's top advocate for woman's contraception litigation. Ms. Solomon is working on the Yaz/Yasmin/Ocella contraception litigation. Yaz, Yasmin and Ocella birth control is a newer type of oral pill sold by Bayer. It has been aggressively marketed

without adequate warnings about serious and potentially life-threatening side effects including blood clots, stroke, and death. Ms. Solomon represents hundreds of plaintiffs who have suffered said injuries as a result of Yaz, Yasmin or Ocella use.

Ms. Solomon also spearheads the firm's Transvaginal Mesh Litigation. Ms. Solomon represents hundreds of women whose lawsuits have been filed against the makers of transvaginal mesh devices. These medical devices were defectively designed and caused serious health problems.

The meshes are implanted to treat pelvic organ prolapse or stress urinary incontinence, but have been linked to mesh erosion, organ damage, chronic pain, bowel and bladder perforation, vaginal scarring, urinary problems and infections which require additional surgeries with permanent damages.

CARSON



Corporations love to represent to the world that they are socially conscious or environmentally friendly. Unfortunately, this is not always true.

Girardi Keese's Tom Girardi, Bob Finnerty and Christopher Aumais are currently pursuing such a case where Dole Foods Company, Inc. and its subsidiaries knowingly built homes in the late 1960's over a heavily polluted site in Carson, California. GK represents over 1,000 residents in the Carson Carousel Housing Tract where a state of emergency was declared

last July by the Carson City Council because of high levels of explosive methane gas and the presence of

cancer-causing benzene 100 times higher than the allowable state risk levels.

When the contamination was discovered, Dole did not step forward in a socially responsible way and has refused to participate in the investigation and remediation of the neighborhood. While the homeowners were told not to come into contact with the soil in their yard, Dole was spending millions to avoid participating in the clean-up. Dole has stated it has a 30 million dollar budget for expert witnesses to help them avoid their responsibilities. Rather than clean-up and engage in social responsibility Dole appears to be content to litigate forever. Dole's defenses are: 1) It happened too long ago; 2) They did not realize that toxic materials would be harmful to people and, 3) It was not them that did it but one of their subsidiaries. The problem for them is they purchased the contaminated property from Shell Oil with full knowledge of the toxic waste. Dole even signed an agreement with Shell saying that they would clean up the site. However, they never removed the contamination and did not disclose anything to the residents who bought the homes.

Ultimately, firms like GK play an integral role in our democracy by holding corporate wrong-doers like Dole accountable.

Zofran Litigation



In 1991, GlaxoSmithKline obtained FDA approval to market Zofran, a powerful anti-nausea medication designed to treat nausea and vomiting in cancer patients undergoing chemotherapy and radiation treatment. Zofran became a top-selling drug and generated \$1.3

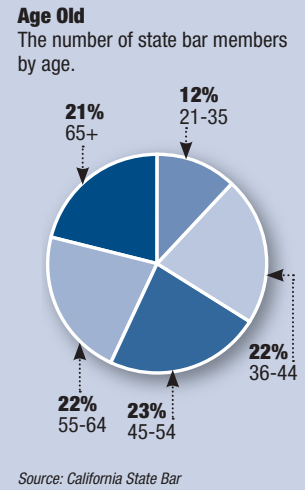
billion in sales for Glaxo in the first 9 months of 2006. In December 2006, Glaxo lost patent protection for Zofran and other pharmaceutical companies were now able to manufacture a generic version of the drug. In order to keep Zofran profitable, Glaxo began marketing Zofran "off-label" to doctors as a treatment for pregnant women experiencing morning sickness, even though Zofran was never tested or approved for such use by the FDA.

Glaxo's desire to put profits before patient safety resulted in total catastrophe. Pregnant women who had been taking Zofran for morning sickness began giving birth to children with birth defects – cardiac malformations, cleft palates and kidney defects. Medical researchers and scientists confirmed the nightmare relationship between Zofran and birth defects was very real, finding a two-fold increase in the risk of certain birth defects to babies born to women taking Zofran during their pregnancy. In 2012, Glaxo agreed to pay a \$3 billion settlement to the U.S. Department of Justice to resolve civil allegations that it promoted several drugs, including Zofran, for off-label use and paid kick-backs to doctors for prescribing the drugs.

Girardi & Keese currently represents several women and their young children who have been devastated by this all too familiar pharmaceutical practice of profits over safety. Thomas V. Girardi and Keith D. Griffin are heading up the litigation team against GlaxoSmithKline on behalf of these women and children who have been so badly harmed by this drug company. Both Mr. Girardi and Mr. Griffin are members of the American Board of Trial Advocates, which is one of the most selective and prestigious trial lawyer organizations in the country.

LAW FIRMSContinued from page A6

REAL ESTATE: Nixon Peabody added eight attorneys to its local office over the past year with growth in its real estate and intellectual property practices.



Rank	Firm <ul style="list-style-type: none">nameaddresswebsite	L.A. Personnel <ul style="list-style-type: none">attorneyspartnersequity partners(current/year ago)	Financials ¹ <ul style="list-style-type: none">revenueprofits per partner(2015/2014)	Practice Areas (partial list)	Offices <ul style="list-style-type: none">year founded in L.A.no. offices (L.A./total)	Profile <ul style="list-style-type: none">headquarters cityexecutive director	Managing Partner(s) <ul style="list-style-type: none">namephone
61	Murchison & Cumming 801 S. Grand Ave., Ninth Floor Los Angeles 90017 murchisonlaw.com	50/47 22/20 5/6	WND WND	professional liability, hospitality and retail, product liability/utilities, health care, insurance law, wildland fire, transportation, corporate	1930 1/5	Los Angeles Dave Cunningham	Dan L. Longo (213) 623-7400
62	Foley & Lardner 555 S. Flower St., Suite 3500 Los Angeles 90071 foley.com	50/55 20/21 18/18	683/665 WND	corporate, health care, intellectual property, labor and employment, litigation, white-collar crime, energy, tax	1996 1/21	N/A Deborah Wasson	Jeffrey R. Atkin (213) 972-4500
63	Selman Breitman 11766 Wilshire Blvd., Sixth Floor Los Angeles 90025 selmanbreitman.com	50/50 19/20 7/9	WND WND	insurance coverage, product liability, toxic tort/environmental, trucking and transportation, business transactions	1980 1/6	Los Angeles Leah Cox	Neil Selman (310) 445-0800
64	Liebert Cassidy Whitmore 6033 W. Century Blvd., Fifth Floor Los Angeles 90045 lcwlegal.com	50/44 18/14 WND	WND WND	labor and employment, litigation, education, public sector, private schools, contracts and facilities	1980 1/5	Los Angeles Gary Connally	Scott Tiedemann (310) 981-2000
65	Nossaman 777 S. Figueroa St., 34th Floor Los Angeles 90017 nossaman.com	48/47 33/34 22/24	WND WND	infrastructure, environmental, litigation, real estate, corporate, labor and employment, bankruptcy	1942 1/7	N/A Kelly Pepper	George Joseph (213) 612-7800
66	Ogletree Deakins 400 S. Hope St., Suite 1200 Los Angeles 90071 ogletreedeakins.com	48/42 22/19 8/5	WND WND	employment law, traditional labor relations, sports and entertainment, wage and hour, class action, disability access, litigation	2003 1/49	Greenville, S.C. Christy Barrett	Betsy Johnson (213) 239-9800
67	Wood Smith Henning & Berman 10960 Wilshire Blvd., 18th Floor Los Angeles 90024 wshblaw.com	48/40 22/19 5/4	WND WND	corporate, entertainment, real estate, environmental, intellectual property, labor and employment, litigation, professional liability	1997 2/18	Los Angeles Cindy Hammond	Stewart D. Reid (310) 481-7600
68	Baker & Hostetler 11601 Wilshire Blvd., Suite 1400 Los Angeles 90025 bakerlaw.com	48/44 20/18 WND	WND WND	bankruptcy, corporate, environmental, intellectual property, labor and employment, litigation, real estate	1990 1/14	N/A R. Steven Kestner	John F. Cermak (310) 820-8800
69	Freeman Freeman & Smiley 1888 Century Park East, Suite 1900 Los Angeles 90067 ffslaw.com	47/42 21/22 25/20	WND WND	litigation, real estate, corporate, probate and trust administration, estate planning, bankruptcy, intellectual property	1976 1/2	Los Angeles Kimberly Holme	Steven L. Ziven (310) 255-6100
70	Nixon Peabody 555 W. Fifth St., 46th Floor Los Angeles 90013 nixonpeabody.com	47/39 17/17 WND	WND WND	corporate, entertainment, health care, intellectual property, labor and employment, litigation, real estate	2005 1/16	N/A N/A	Seth Levy (213) 629-6000
71	Arnold & Porter 777 S. Figueroa St., 44th Floor Los Angeles 90017 arnoldporter.com	47/52 14/16 14/16	WND WND	antitrust, bankruptcy, corporate, environmental, intellectual property, litigation, technology	1991 1/9	Washington, D.C. Tom Alburtus	Sean Morris (213) 243-4000
72	Adelson Testan Brundo Novell & Jimenez 31330 Oak Crest Drive Westlake Village 91361 atblaw.net	46/47 25/23 1/2	WND WND	workers' compensation defense, civil litigation, labor and employment, litigation	1996 4/26	Westlake Village Misty Price	Steven C. Testan (818) 225-5868
73	Jenner & Block 633 W. Fifth St., Suite 3600 Los Angeles 90071 jenner.com	45/37 17/17 WND	WND/408 WND/1,613	antitrust, corporate, entertainment, intellectual property, litigation, M&A, technology	2009 1/5	Chicago N/A	Rick Richmond (213) 239-5100
74	Keesal Young & Logan 400 Oceangate Long Beach 90802 kyl.com	44/46 26/24 21/19	WND WND	mortgage banking, securities litigation, corporate, environmental, labor and employment, litigation, real estate	1970 1/5	Long Beach Marilyn Whitcomb	Samuel "Skip" A. Keesal Jr. (562) 436-2000
75	Fox Rothschild 1800 Century Park East, Suite 300 Los Angeles 90067 foxrothschild.com	43/36 23/21 14/11	WND WND	entertainment, intellectual property, labor and employment, litigation, financial restructuring	2006 2/22	Philadelphia Mark Silow	Darrell D. Miller (310) 598-4150
76	Sedgwick 801 S. Figueroa St., 19th Floor Los Angeles 90017 sedgwicklaw.com	43/41 20/19 11/11	WND WND	insurance, product liability, construction, entertainment, health care, intellectual property, litigation	1979 1/16	San Francisco Kathy Whang	Craig S. Barnes (213) 426-6900
77	Hogan Lovells 1999 Avenue of the Stars, Suite 1400 Los Angeles 90067 hoganlovells.com	43/42 14/13 WND	1,820/1,780 1,251/1,217	corporate, entertainment, health care, labor and employment, litigation, M&A, real estate	1996 1/46	Washington, D.C. Robin Samuel	Barry L. Dastin (310) 785-4600
78	White & Case 555 S. Flower St., Suite 2700 Los Angeles 90071 whitecase.com	43/38 11/11 WND	WND WND	bank finance, bankruptcy, corporate, litigation, tax, technology, white-collar crime	1986 1/39	New York Betty Archer	Bryan A. Merryman (213) 620-7700
79	Bird Marella Boxer Wolpert Nessim Dooks Lincenberg & Rhow 1875 Century Park East, 23rd Floor Los Angeles 90067 birdmarella.com	42/37 19/18 WND	WND WND	complex civil litigation, white-collar criminal defense, entertainment, health care, litigation, technology	1981 1/1	Los Angeles Brian Robbins	Paul S. Chan (310) 201-2100
80	Hill Farrer & Burrill 300 S. Grand Ave., 37th Floor Los Angeles 90071 hillfarrer.com	41/41 29/28 29/28	WND WND	business law, bankruptcy, corporate, environmental, labor and employment, litigation, real estate, tax	1923 1/1	Los Angeles Dalia Cleveland	Scott L. Gilmore (213) 620-0460

¹ Firmwide revenue in millions. Firmwide profits per partner in thousands.
N/A - Not Applicable WND - Would Not Disclose
Note: The information on this list was provided by representatives of the firms themselves. Law firms are ranked by the number of attorneys and partners in L.A. County offices, respectively. To the best of our knowledge, this information is accurate as of press time. While every effort is made to ensure the accuracy and thoroughness of the list, omissions and typographical errors sometimes occur. Please send corrections or additions on company letterhead to the Research Department, Los Angeles Business Journal, 5700 Wilshire Blvd., Suite 170, Los Angeles 90036. ©2016 Los Angeles Business Journal. This list may not be reprinted in whole or in part without prior written permission from the editor. Reprints are available from the YGS Group, (800) 290-5460 ext. 100.

Researched by David Nusbaum



**WE SEE
OPPORTUNITIES
WHERE OTHERS
SEE BRICK
WALLS**

Stradling
Attorneys at Law

SYCR.COM

424-214-7000
Stradling Yocca Carlson & Rauth, P.C.
100 Wilshire Boulevard, Fourth Floor
Santa Monica, CA 90401

Santa Monica

Newport Beach-HQ | Denver | Reno | Sacramento | San Diego | San Francisco (Financial District) | San Francisco (SOMA) | Santa Barbara | Seattle

LAW FIRMSContinued from page A8

DEBTORS: Pachulski Stang Ziehl & Jones has represented debtors in bankruptcies of American Apparel, Fisker Automotive and Magnum Hunter Resources, among others.

MERGER: Christie Parker & Hale merged with Lewis Roca Rothgerber on January 1 to become Lewis Roca Rothgerber Christie. With approximately 300 attorneys, Lewis Roca Rothgerber Christie offices are located in Albuquerque, Colorado Springs, Denver, Las Vegas, Los Angeles, Orange County, Phoenix, Reno, Silicon Valley and Tucson.

MUSIC: Michelman & Robinson is representing songwriter David Lowery, lead singer and guitarist of bands Cracker and Camper Van Beethoven, in a \$150 million class action against Spotify filed on December 28 in the Central District Court of California.


Rank	Firm <ul style="list-style-type: none">• name• address• website	L.A. Personnel <ul style="list-style-type: none">• attorneys• partners• equity partners (current/year ago)	Financials ¹ <ul style="list-style-type: none">• revenue• profits per partner (2015/2014)	Practice Areas (partial list)	Offices <ul style="list-style-type: none">• year founded in L.A.• no. offices (L.A./total)	Profile <ul style="list-style-type: none">• headquarters city• executive director	Managing Partner(s) <ul style="list-style-type: none">• name• phone
81	Blank Rome 2029 Century Park East, Sixth Floor Los Angeles 90067 blankrome.com	41/44 17/16 WND	\$345/\$331 \$888/\$825	financial services, corporate, labor and employment, litigation, M&A, real estate, tax	2009 1/14	Philadelphia Alan Hoffman	Gregory M. Bordo (424) 239-3400
82	Burke Williams & Sorensen 444 S. Flower St., Suite 2400 Los Angeles 90071 bwsllaw.com	40/40 27/27 11/11	WND WND	public law, construction, education, environmental, insurance, labor and employment, litigation, real estate, labor and employment	1927 1/9	Los Angeles April Van Wye	John J. Welsh (213) 236-0600
83	Pachulski Stang Ziehl & Jones 10100 Santa Monica Blvd. Los Angeles 90067 pszjlaw.com	40/40 22/22 22/22	WND WND	private equity, bankruptcy, corporate, entertainment, health care, litigation, real estate	1983 1/4	Los Angeles Megan Lorick	Dean A. Ziehl (310) 277-6910
84	Carroll Kelly Trotter Franzen McKenna & Peabody 111 W. Ocean Blvd., 14th Floor Long Beach 90802 cktfmlaw.com	40/43 14/16 3/3	WND WND	litigation	1994 1/3	Long Beach Karen Bailey	Michael J. Trotter (562) 432-5855
85	Lewis Roca Rothgerber Christie 655 N. Central Ave., Suite 2300 Glendale 91203 lrrc.com	38/39 20/20 18/17	WND WND	IP licensing, IP strategy, prosecution and litigation for patents, trademarks, copyrights and trade secrets, Internet law and domain disputes	1954 1/10	Glendale Albert Woo	Gregory Lampert (626) 795-9900
86	Elkins Kalt Weintraub Reuben Gartside 2049 Century Park East, Suite 2700 Los Angeles 90067 elkinskalt.com	38/35 20/17 WND	WND WND	land use, estate planning, corporate, environmental, litigation, real estate, tax	2010 1/1	Los Angeles Darcy Simon	Keith D. Elkins Scott M. Kalt (310) 746-4400
87	Michelman & Robinson 10880 Wilshire Blvd., 19th Floor Los Angeles 90024 mrlp.com	38/39 17/17 6/6	WND WND	insurance, hospitality, advertising, digital media, labor and employment, corporate, appellate, regulatory	1999 1/5	Los Angeles Jeep Jensen	Dana Kravetz (310) 564-2670
88	Sullivan & Cromwell 1888 Century Park East Los Angeles 90067 sullcrom.com	37/38 37/8 8/8	WND WND	corporate, intellectual property, litigation, M&A, technology	1984 1/12	New York N/A	Robert A. Sacks (310) 712-6600
89	Barnes & Thornburg 2029 Century Park East, Suite 300 Los Angeles 90067 btlaw.com	37/34 24/22 WND	WND WND	entertainment, intellectual property, franchise and distribution, labor and employment, real estate, corporate	2011 1/13	N/A N/A	David C. Allen (310) 284-3880
90	Wolf Rifkin Shapiro Schulman & Rabkin 11400 W. Olympic Blvd., Ninth Floor Los Angeles 90064 wrslawyers.com	37/38 20/21 7/7	WND WND	common interest developments, real estate, entertainment, corporate, music and intellectual property, litigation	1977 1/3	Los Angeles N/A	Michael Wolf (310) 478-4100

¹ Firmwide revenue in millions. Firmwide profits per partner in thousands.
N/A - Not Applicable WND - Would Not Disclose

Note: The information on this list was provided by representatives of the firms. Firms are ranked by the number of attorneys and partners in L.A. County offices, respectively.
Researched by David Nusbaum

One focus.

Zero fear.



IP
FOR A
NEW
AGE®

Knobbe Martens
INTELLECTUAL PROPERTY LAW

knobbe.com

Knobbe Martens has spent the last half-century focused on just one thing: providing world-class IP services to those whose ideas move the world forward. Today we continue our work — representing our clients with fearless determination and results that speak for themselves.

Mauricio Uribe, Partner

LOS ANGELES BUSINESS JOURNAL

Get it as it Happens.

Local Business News from Your Local Business Source.



LABJ

News & Reports @LABJnews
Events, Awards & Promotions @LABJcommunity

LAW FIRMS

LITIGATION: In January, Eisner Jaffe added a group of four litigation attorneys led by James Turken from the former Dickstein Shapiro Los Angeles office.

SUPREME COURT: Mayer Brown partner John Nadolenco represents Pasadena-based Spokeo in a U.S. Supreme Court case that involves a data broker who published inaccurate information about a man's personal and professional life. The case is important because it will affect how and when people can sue companies that violate various laws about data and consumer protection.

Rank	Firm <ul style="list-style-type: none">nameaddresswebsite	L.A. Personnel <ul style="list-style-type: none">attorneyspartnersequity partners (current/year ago)	Financials ¹ <ul style="list-style-type: none">revenueprofits per partner (2015/2014)	Practice Areas (partial list)	Offices <ul style="list-style-type: none">year founded in L.A.no. offices (L.A./total)	Profile <ul style="list-style-type: none">headquarters cityexecutive director	Managing Partner(s) <ul style="list-style-type: none">namephone
91	Pircher Nichols & Meeks 1925 Century Park East, Suite 1700 Los Angeles 90067 pircher.com	37/38 13/15 13/15	WND WND	real estate	1983 1/2	Los Angeles Noel Poole	Executive Committee (310) 201-8900
92	Eisner Jaffe 9601 Wilshire Blvd., Suite 700 Beverly Hills 90210 eisnerlaw.com	36/26 13/9 1/1	WND WND	media, art, antitrust, corporate, entertainment, intellectual property, litigation, M&A, real estate	1999 1/1	Beverly Hills Wendy Caldwell	Michael Eisner (310) 855-3200
93	Mayer Brown 350 S. Grand Ave., 25th Floor Los Angeles 90071 mayerbrown.com	35/39 14/14 WND	1,257/1,223 1,558/1,448	antitrust, corporate, intellectual property, labor and employment, litigation, real estate	1985 1/22	Chicago Clinton Kennedy	Philip Recht (213) 229-9500
94	Stroock & Stroock & Lavan 2029 Century Park East, Suite 1600 Los Angeles 90067 stroock.com	35/37 8/9 8/9	266/261 1,244/1,231	class action/financial services, M&A, insurance, entertainment, real estate, private equity, corporate, litigation	1975 1/4	New York Diane Cohen	Julia Strickland (310) 556-5800
95	Pearlman Borska & Wax 15910 Ventura Blvd., 18th Floor Encino 91436 pbw-law.com	35/36 8/8 3/3	WND WND	workers' compensation defense, labor and employment	1984 3/7	Encino Barry Pearlman	Barry S. Pearlman (818) 501-4343
96	Polsinelli 2049 Century Park East, Suite 2300 Los Angeles 90067 polsinelli.com	34/36 25/22 9/10	410/368 734/651	corporate, health care, financial services, real estate, toxic tort/product liability, litigation	2011 1/20	Kansas City, Mo. N/A	Noel Cohen (310) 556-1801
97	Dykema Gossett 333 S. Grand Ave., Suite 2100 Los Angeles 90071 dykema.com	34/31 17/15 WND	WND WND	bankruptcy, corporate, intellectual property, labor and employment, litigation, M&A, real estate	2003 1/15	N/A Richard Holdrup	Michael P. Wippler (213) 457-1800
98	Haight Brown & Bonesteel 555 S. Flower St., 45th Floor Los Angeles 90071 hbblaw.com	34/34 16/15 7/8	WND WND	appellate, product liability, bankruptcy, corporate, environmental, labor and employment, litigation	1937 1/6	Los Angeles N/A	S. Christian Stouder (213) 542-8000
99	Tucker Ellis 515 S. Flower St., 42nd Floor Los Angeles 90071 tuckerellis.com	34/35 12/11 12/11	WND WND	class action and complex litigation, pharmaceutical and medical device, product liability, mass tort	2003 1/7	Cleveland N/A	Mollie Benedict (213) 430-3400
100	Steptoe & Johnson 2121 Avenue of the Stars, Suite 2800 Los Angeles 90067 steptoe.com	34/36 7/8 7/8	357/353 940/910	commercial litigation, professional liability, product liability, toxic tort litigation, ERISA, labor and employment, intellectual property	1997 2/10	Washington, D.C. Rosensweig Reisinger-Green	Seong Kim Jason Levin (310) 734-3200

¹ Firmwide revenue in millions. Firmwide profits per partner in thousands.
N/A - Not Applicable WND - Would Not Disclose

Note: The information on this list was provided by representatives of the firms. Firms are ranked by the number of attorneys and partners in L.A. County offices, respectively.
Researched by David Nusbaum

Continued on page A12



It is not a matter of if, but when.

Anticipate. Attack. Counter. Defense is the best offense.

Knowing when to dodge and fade is surely a great skill.

Sensing when to strike is the real art. We maneuver however best to champion your cause and clinch victory. 17 offices nationwide. Over 175 attorneys. Always ready to win.

WSHB

WOOD
SMITH
HENNING
BERMAN

877 974-2529

wshblaw.com

LAW FIRMSContinued from page A11

ENERGY: Andrea Wang Lucan, who represents renewable energy companies in project development and finance, recently joined the Los Angeles office of K&L Gates.

OFFICES: Pasadena firm Anglin Flewelling Rasmussen Campbell & Trytten opened offices in Seattle and Portland in January.

Rank	Firm <ul style="list-style-type: none">nameaddresswebsite	L.A. Personnel <ul style="list-style-type: none">attorneyspartnersequity partners (current/year ago)	Financials ¹ <ul style="list-style-type: none">revenueprofits per partner (2015/2014)	Practice Areas (partial list)	Offices <ul style="list-style-type: none">year founded in L.A.no. offices (L.A./total)	Profile <ul style="list-style-type: none">headquarters cityexecutive director	Managing Partner(s) <ul style="list-style-type: none">namephone
101	Parker Milliken 555 S. Flower St., 30th Floor Los Angeles 90071 pmcos.com	34/33 WND WND	WND WND	business litigation, civil litigation, estate planning, family law, labor and employment, environmental law, tax	1913 1/1	Los Angeles N/A	Larry G. Ivanjack Richard D Robins (213) 683-6500
102	Hooper Lundy & Bookman 1875 Century Park East, Suite 1600 Los Angeles 90067 health-law.com	33/33 20/20 16/16	53/51 WND	health care	1987 1/4	Los Angeles Susan Nakashima	Robert W. Lundy (310) 551-8111
103	Chapman Glucksman Dean Roeb & Barger 11900 W. Olympic Blvd., Suite 800 Los Angeles 90064 cgdrblaw.com	33/32 12/12 WND	WND WND	business and commercial law, construction law/real estate, catastrophic loss and products liability, professional liability	1985 1/3	Los Angeles Gina Acuna	Arthur Chapman Richard Glucksman (310) 207-7722
104	Price Law Group 15760 Ventura Blvd., Suite 830 Encino 91436 pricelawgroup.com	33/32 4/4 N/A	WND WND	insurance bad faith, consumer protection, trustees & estates, bankruptcy, labor and employment, litigation, real estate	1991 4/26	Encino Karen Tahler	Stuart M. Price (800) 884-6000
105	Horvitz & Levy 15760 Ventura Blvd., 18th Floor Encino 91436 horvitzlevy.com	32/32 21/21 21/20	WND WND	appellate law	1957 1/1	Los Angeles Julia Furtak	Barry Levy (818) 995-0800
106	K&L Gates 10100 Santa Monica Blvd., Eighth Floor Los Angeles 90067 klgates.com	32/34 15/17 WND	WND/1,145 WND	bankruptcy, construction, corporate/M&A, insurance coverage, labor and employment, litigation, real estate, renewable energy	2000 1/45	N/A Fiona Oboussier Lowe	Paul W. Sweeney Jr. (310) 552-5000
107	Squire Patton Boggs 555 S. Flower St., 31st Floor Los Angeles 90071 squiresanders.com	32/26 14/13 WND	WND WND	litigation, environmental, corporate, M&A, public finance, financial services, labor and employment	1962 1/45	N/A N/A	Adam Fox (213) 624-2500
108	Girardi Keese 1126 Wilshire Blvd. Los Angeles 90017 girardikeese.com	32/30 6/6 6/6	WND WND	personal injury, medical malpractice, product liability, toxic tort, pharmaceutical class action, antitrust	1965 1/2	Los Angeles N/A	Thomas V. Girardi (213) 977-0211
109	Crowell & Moring 515 S. Flower St., 40th Floor Los Angeles 90071 crowell.com	31/26 13/12 N/A	363/368 1,036/1,028	products liability, government contracts, antitrust, corporate, health care, litigation, white-collar crime	2008 1/10	Washington, D.C. Mark Neighbors	Jason Murray (213) 622-4750
110	Locke Lord 300 S. Grand Ave., Suite 2600 Los Angeles 90071 lockelord.com	31/40 12/17 8/8	597/427 891/971	insurance and reinsurance, commercial litigation and transactions, energy, class action, real estate	1978 1/22	N/A N/A	Mitchell J. Popham (213) 485-1500
111	WilmerHale 350 S. Grand Ave., Suite 2100 Los Angeles 90071 wilmerhale.com	31/25 6/5 6/5	WND/1,071 WND/1,603	securities litigation, antitrust, intellectual property, litigation, white-collar crime	2007 1/12	Wasington D.C. / Boston N/A	Randall R. Lee (213) 443-5300
112	Lewitt Hackman Shapiro Marshall & Harlan 16633 Ventura Blvd., 11th Floor Encino 91436 lewitthackman.com	30/29 19/19 WND	WND WND	business/corporate, M&A, commercial finance, employment, environmental, franchise and licensing, real estate, intellectual property, family law, tax	1969 1/1	Encino N/A	Keith T. Zimmet (818) 990-2120
113	TroyGould 1801 Century Park East, Suite 1600 Los Angeles 90067 troygould.com	30/29 19/19 WND	WND WND	corporate/securities, employment, entertainment/IP, life sciences, litigation, real estate, tax	1970 1/1	Los Angeles Diane Gordon	Sanford Hillsberg (310) 553-4441
114	Caldwell Leslie & Proctor, PC 725 S. Figueroa St., 31st Floor Los Angeles 90017 caldwell-leslie.com	30/30 16/15 16/15	WND WND	entertainment, environmental, intellectual property, labor and employment, litigation, technology, white-collar crime	1988 1/1	Los Angeles Ladd Albrechtsen	Christopher G. Caldwell (213) 629-9040
115	Anglin Flewelling Rasmussen Campbell & Trytten 199 S. Los Robles Ave., Suite 600 Pasadena 91101 afrct.com	30/29 9/9 WND	WND WND	business transactions, real estate, finance, bankruptcy, employment, commercial litigation, regulatory compliance	2002 1/3	Pasadena N/A	Richard Rasmussen (626) 535-1900
116	Gibbs Giden Locher Turner Senet & Wittbrodt 1880 Century Park East, 12th Floor Los Angeles 90067 gibbsgiden.com	29/29 18/20 13/13	WND WND	construction and public contracts, business and commercial law, labor and employment, real estate, risk management	1978 1/2	Los Angeles Lisa Torres	Richard J. Wittbrodt (310) 552-3400
117	Stradling Yocca Carlson & Rauth 100 Wilshire Blvd., Fourth Floor Santa Monica 90401 sycr.com	29/25 14/12 WND	WND WND	bankruptcy, corporate, intellectual property, labor and employment, litigation, M&A, technology	2012 1/8	Newport Beach Samantha McDermott	David Smith (424) 214-7000
118	Theodora Oringher PC 1840 Century Park East, Suite 500 Los Angeles 90067 tocounsel.com	28/25 15/15 WND	WND WND	litigation, construction, corporate, health care, intellectual property, labor and employment, white-collar crime	1991 1/2	Los Angeles Miles Amarino	Todd C. Theodora Kevin A. Dorse (310) 557-2009
119	Brutzkus Gubner 21650 Oxnard St., Suite 500 Woodland Hills 91367 brutzkusgubner.com	28/27 14/13 WND	WND WND	bankruptcy, corporate, intellectual property, labor and employment, litigation, real estate	1983 1/2	Woodland Hills Scott Dressler	Steven Gubner (818) 827-9000
120	Anderson McPharlin & Connors 707 Wilshire Blvd., Suite 4000 Los Angeles 90017 amclaw.com	28/30 13/13 13/13	WND WND	legal malpractice defense, surety construction, coverage, title litigation, employment, casualty, labor and employment, litigation	1947 1/2	Los Angeles Lynette Harris	Eric Schneider (213) 688-0080

¹ Firmwide revenue in millions. Firmwide profits per partner in thousands.
N/A - Not Applicable WND - Would Not Disclose

Note: The information on this list was provided by representatives of the firms. Firms are ranked by the number of attorneys and partners in L.A. County offices, respectively.
Researched by David Nusbaum

LAW FIRMS

Lawyer Locator

The number of active state bar members by county.

Los Angeles	29%
Out of State	11
San Francisco	10
Orange	9
San Diego	9
Santa Clara	6
Sacramento	4
Alameda	4
Remainder of California	18

Source: California State Bar

Rank	Firm <ul style="list-style-type: none">nameaddresswebsite	L.A. Personnel <ul style="list-style-type: none">attorneyspartnersequity partners (current/year ago)	Financials ¹ <ul style="list-style-type: none">revenueprofits per partner (2015/2014)	Practice Areas (partial list)	Offices <ul style="list-style-type: none">year founded in L.A.no. offices (L.A./total)	Profile <ul style="list-style-type: none">headquarters cityexecutive director	Managing Partner(s) <ul style="list-style-type: none">namephone
121	Cooley 1333 Second St., Suite 400 Santa Monica 90401 cooley.com	28/24 8/7 8/7	\$912/\$802 \$1,885/\$1,735	corporate, litigation, compensation and benefits, tech transactions, media, venture capital, private equity, entertainment, intellectual property	2012 1/12	Palo Alto Susan Newberry	Thomas Hopkins (310) 883-6400
122	Yukevich Cavanaugh 355 S. Grand Ave., 15th Floor Los Angeles 90071 yukelaw.com	28/30 7/7 5/5	WND WND	product liability defense, litigation	1995 1/3	Los Angeles Vivian Powers	James J. Yukevich (213) 362-7777
123	Hueston Hennigan 523 W. Sixth St. Los Angeles 90014 hueston.com	28/22 6/5 6/5	WND/50 WND	antitrust, class action defense, intellectual property, litigation, white-collar crime environmental	2015 1/2	Los Angeles Lori Hiles	Brian Hennigan (213) 788-4340
124	Robins Kaplan 2049 Century Park East, Suite 3400 Los Angeles 90067 robinskaplan.com	27/30 14/15 N/A	WND WND	retail, antitrust, bankruptcy, entertainment, intellectual property, litigation, technology	1995 1/6	Minneapolis Steven Schumeister	Michael A. Geibelson (310) 552-0130
125	Clark & Trevithick 800 Wilshire Blvd., 12th Floor Los Angeles 90017 clarktrev.com	27/27 14/14 N/A	WND WND	commercial, corporate, elder law, estate planning, litigation, labor and employment, real estate, tax	1977 1/1	Los Angeles Vivian Jasper	Alexander C. McGilvray Jr. (213) 629-5700
126	Stubbs Alderton & Markiles 15260 Ventura Blvd., 20th Floor Sherman Oaks 91403 stubbsalderton.com	27/27 14/14 13/13	WND WND	digital media, startups, middle market, M&A, venture capital, entertainment, mobile	2002 2/2	Sherman Oaks Heidi Hubbeling	Scott Alderton (818) 444-4500
127	Engstrom Lipscomb & Lack 10100 Santa Monica Blvd., 12th Floor Los Angeles 90067 elllaw.com	27/26 7/7 2/2	WND WND	mass tort/class action, pharmaceutical litigation, environmental, litigation	1974 1/1	Los Angeles Gloria Weller	Walter J. Lack (310) 552-3800
128	Simpson Thacher & Bartlett 1999 Avenue of the Stars, 29th Floor Los Angeles 90067 simpsonthacher.com	27/27 4/5 4/5	WND/1,246 WND/3,480	private equity fund formation, consumer class action, corporate, litigation, M&A	1996 1/11	New York Michael Hersch	Thomas A. Wuchenich (310) 407-7500
129	Hansen Jacobson Teller Hoberman Newman Warren Richman Rush & Kaller 450 N. Roxbury Drive, Eighth Floor Beverly Hills 90210 hjth.com	26/24 20/19 9/9	WND WND	transactional entertainment law	1987 1/1	Beverly Hills Melissa Matallana	Ken Richman (310) 271-8777
130	Bradley & Gmelich 700 N. Brand Blvd., 10th Floor Glendale 91203 bglawyers.com	26/25 10/8 WND	WND WND	civil litigation defense, business litigation and transactions, security guard litigation, corporate, labor and employment, litigation	2000 1/2	Glendale Cheryl Davis	Barry Bradley (818) 243-5200

¹ Firmwide revenue in millions. Firmwide profits per partner in thousands.
N/A - Not Applicable WND - Would Not Disclose

Note: The information on this list was provided by representatives of the firms. Firms are ranked by the number of attorneys and partners in L.A. County offices, respectively.
Researched by David Nusbaum

Continued on page A14



Sometimes you need a different perspective.

What is it about seeing something upside-down that makes you stop and take a second look? The attorneys and policy advisors at Nossaman LLP approach the practice of law and legislation by tackling issues from different perspectives, and work together to provide creative solutions to our clients’ challenges. We provide the strategic guidance needed to deliver impactful results that benefit our clients and communities.

You define success. Together, we make it happen.



LAW FIRMSContinued from page A13

TELEVISION: Kinsella Weitzman Iser Kump & Aldisert represented the creator, writer, and executive producer of television series “The Walking Dead” and talent agency CAA in a suit against the AMC television network.

LABJ 100
The number of attorneys at L.A. County's 100 largest law firms increased sharply this year.

Year	Number of Attorneys
'12	7,420
'13	7,420
'14	7,340
'15	7,340
'16	7,460

Source: Business Journal research

Rank	Firm <ul style="list-style-type: none">nameaddresswebsite	L.A. Personnel <ul style="list-style-type: none">attorneyspartnersequity partners (current/year ago)	Financials ¹ <ul style="list-style-type: none">revenueprofits per partner (2015/2014)	Practice Areas (partial list)	Offices <ul style="list-style-type: none">year founded in L.A.no. offices (L.A./total)	Profile <ul style="list-style-type: none">headquarters cityexecutive director	Managing Partner(s) <ul style="list-style-type: none">namephone
131	Hunton & Williams 550 S. Hope St., Suite 2000 Los Angeles 90071 hunton.com	26/29 8/9 8/9	WND WND	bankruptcy, environmental, labor and employment, litigation, real estate	2006 1/19	Washington, D.C. Becky Ma	Ann Marie Mortimer (213) 532-2000
132	Hemar Roussso & Heald 15910 Ventura Blvd., 12th Floor Encino 91436 hrhlaw.com	26/28 6/6 N/A	WND WND	commercial collection litigation, bankruptcy, litigation	1976 1/1	Encino Marty Roussso	Daniel Heald (818) 501-3800
133	Nemecek & Cole 15260 Ventura Blvd., Suite 920 Sherman Oaks 91403 nemecek-cole.com	26/23 3/3 3/3	WND WND	professional liability defense, labor and employment, litigation	1984 1/1	Sherman Oaks Barbara Cole	Jonathan B. Cole (818) 788-9500
134	Russ August & Kabat 12424 Wilshire Blvd., 12th Floor Los Angeles 90025 raklaw.com	25/27 16/17 8/7	WND WND	garment and textile, trust and estate litigation, corporate, intellectual property, litigation, M&A, real estate	1993 2/2	Los Angeles Bonnie Anderson	Larry C. Russ (310) 826-7474
135	Veatch Carlson 700 S. Flower St., 22nd Floor Los Angeles 90017 veatchfirm.com	25/25 10/10 WND	WND WND	products liability, premises liability, injury defense, intellectual property, business litigation, insurance	1950 1/1	Los Angeles N/A	James Galloway Jr. (213) 381-2861
136	Gilbert Kelly Crowley & Jennett 550 S. Hope St., 22nd Floor Los Angeles 90071 gilbertkelly.com	24/27 16/18 4/4	WND WND	civil litigation defense, coverage and bad faith, employment and labor law defense, reinsurance, environmental defense	1936 1/4	Los Angeles Greg Chavis Allison Phillips	Arthur J. McKeon III (213) 615-7000
137	Drinker Biddle & Reath 1800 Century Park East, Suite 1500 Los Angeles 90067 drinkerbiddle.com	24/26 12/11 7/8	WND/381 WND/719	employee benefits, bankruptcy, entertainment, intellectual property, labor and employment, litigation	2001 1/11	Philadelphia N/A	Sheldon Eisenberg (310) 203-4000
138	Bowman & Brooke 970 W. 190th St., Suite 700 Torrance 90502 bowmanandbrooke.com	24/27 11/11 WND	WND WND	product liability, medical drug and device, environmental, liability litigation, commercial litigation, intellectual property	1990 1/12	Minneapolis Paul Cereghini	Lawrence Ramsey (310) 768-3068
139	Goodwin Procter 601 S. Figueroa St., 41st Floor Los Angeles 90017 goodwinprocter.com	24/27 8/8 3/4	866/786 1,990/1,745	public/private finance, corporate, intellectual property, litigation, M&A, real estate, technology	2006 1/9	N/A Michael Caplan	Dean Pappas (213) 426-2500
140	Miller Barondess 1999 Avenue of the Stars, Suite 1000 Los Angeles 90067 millerbarondess.com	24/21 8/8 7/7	WND WND	litigation	2006 1/1	Los Angeles Betsy Miller	Louis R. Miller (310) 552-4400
141	Stone Grzegorek & Gonzalez 800 Wilshire Blvd., Ninth Floor Los Angeles 90017 sggimmigration.com	24/20 5/5 WND	WND WND	immigration	2005 1/1	Los Angeles Lincoln Stone	Lincoln Stone (213) 627-8997
142	Levene Neale Bender Yoo & Brill 10250 Constellation Blvd., Suite 1700 Los Angeles 90067 lnbyb.com	23/23 17/17 WND	WND WND	bankruptcy, insolvency, commercial litigation, assignments for the benefit of creditors	1995 3/3	Los Angeles N/A	Ron Bender David Neale (310) 229-1234
143	LaFollette Johnson DeHaas Fesler & Ames 865 S. Figueroa St., Suite 3200 Los Angeles 90017 ljdfa.com	23/26 8/8 WND	WND WND	medical malpractice, insurance defense, health care, litigation	1965 1/5	Los Angeles Amy Freeman	Christopher Wend (213) 426-3600
144	Frandzel Robins Bloom & Csato 6500 Wilshire Blvd., 17th Floor Los Angeles 90048 frandzel.com	23/25 WND WND	WND WND	creditors' rights, employment, bankruptcy, litigation, real estate	1979 1/3	Los Angeles Debra Gray	Patricia Y. Trendacosta (323) 852-1000
145	Kinsella Weitzman Iser Kump & Aldisert 808 Wilshire Blvd., Third Floor Santa Monica 90401 kwikalaw.com	22/22 16/16 WND	WND WND	entertainment, intellectual property, litigation	2006 1/1	Santa Monica Renate DeLeon	Lawrence Y. Iser (310) 566-9800
146	Thompson Coburn 2029 Century Park East, 19th Floor Los Angeles 90067 thompsoncoburn.com	21/19 13/12 11/10	194/198 527/560	trusts and estates, corporate, intellectual property, labor and employment, litigation, real estate, tax	2013 1/5	St. Louis Stephen Blackwell	Barry M. Weisz (310) 282-2500
147	Myman Greenspan Fineman Fox Rosenberg & Light 11601 Wilshire Blvd., Suite 2200 Los Angeles 90025 mymangreenspan.com	21/19 12/11 8/8	WND WND	entertainment (motion picture, television, music), chefs, intellectual property	1978 1/3	Los Angeles N/A	Eric Greenspan (310) 231-0800
148	Hunt Ortmann 301 N. Lake Ave., Seventh Floor Pasadena 91101 huntortmann.com	21/17 10/10 WND	WND WND	construction, real estate, employment	1990 1/1	Pasadena N/A	Gordon Hunt (626) 440-5200
149	Bonne Bridges Mueller O'Keefe & Nichols 3699 Wilshire Blvd., 10th Floor Los Angeles 90010 bonnebridges.com	21/23 8/9 WND	WND WND	medical malpractice defense, litigation, administrative law, health care, employment, appellate, elder care	1961 1/2	Los Angeles Rose Bazan	David O'Keefe (213) 480-1900
150	McCune & Harber 515 S. Figueroa St., Suite 1150 Los Angeles 90071 mccuneharber.com	21/18 7/7 WND	WND WND	private and public entity defense, insurance defense, personal injury	1980 1/1	Los Angeles N/A	Dana McCune (213) 689-2500

¹ Firmwide revenue in millions. Firmwide profits per partner in thousands.
N/A - Not Applicable WND - Would Not Disclose
Note: The information on this list was provided by representatives of the firms. Firms are ranked by the number of attorneys and partners in L.A. County offices, respectively. To the best of our knowledge, this information is accurate as of press time. While every effort is made to ensure the accuracy and thoroughness of the list, omissions and typographical

errors sometimes occur. Please send corrections or additions on company letterhead to the Research Department, Los Angeles Business Journal, 5700 Wilshire Blvd., Suite 170, Los Angeles 90036. ©2016 Los Angeles Business Journal. This list may not be reprinted in whole or in part without prior written permission from the editor. Reprints are available from the YGS Group, (800) 290-5460 ext. 100.

THE LOS ANGELES BUSINESS JOURNAL'S BUSINESS HALL of FAME AWARDS



2016 Business Person of the Year

Peter Guber

Entrepreneur, Executive & #1 NYT Best Selling Author

Please join us at our 15th annual Business Hall of Fame Event to honor the 2016 Business Person of the Year, Peter Guber, and top ranked companies in the Los Angeles Business Journal Book of Lists.

Luncheon and Awards Ceremony

Wednesday, March 23, 2016

Millennium Biltmore Hotel, 506 South Grand Avenue, Los Angeles, CA 90071

11:00 am–1:30 pm • Tickets: \$125/ Corporate Tables of 10: \$1,000

For more information or to register, visit us online at www.labusinessjournal.com/bizevents.

PLATINUM
SPONSORS:



Former Hall of Fame Inductees



John C.
Cushman, III
2015



Stewart &
Lynda Reznick
2014



Russell Goldsmith
2013



Dominic Ng
2012



Timothy Leiweke
2011



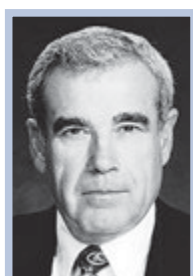
Patrick
Soon-Shiong
2010



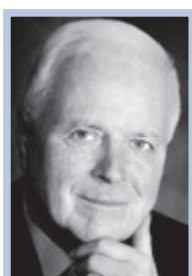
Rick Caruso
2009



Peggy & Andrew Cherng
2008



Edward Roski
2007



Richard Riordan
2006



Eli Broad
2005



John Anderson
2004

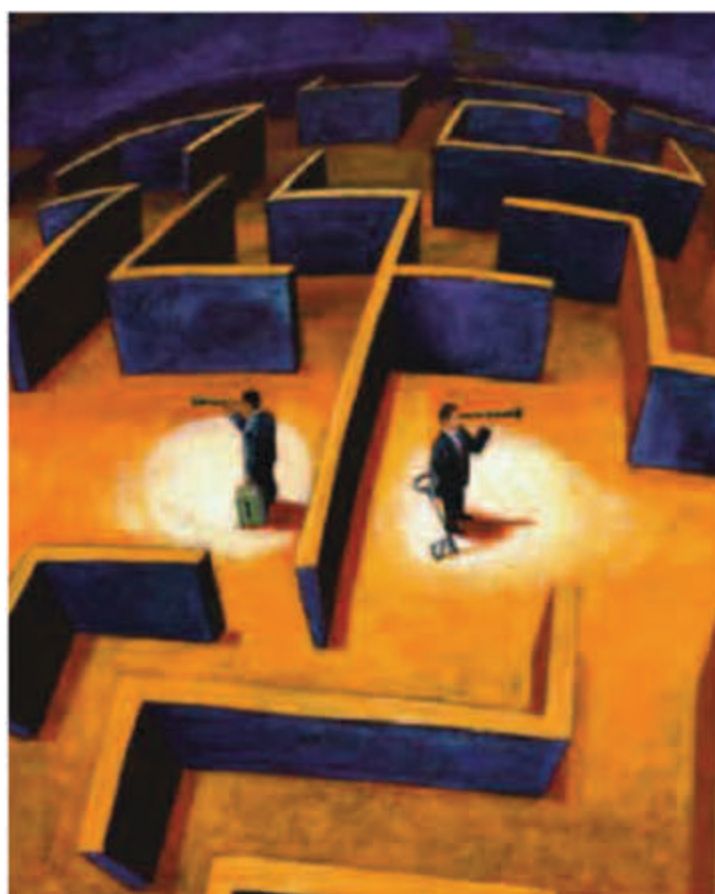


Alfred Mann
2003



Kent Kresa
2002

**Workplace
and labor
laws are
complex
and ever
changing.**



**Let us
guide you
through
the maze.**

The best way to fight legal issues in the workplace is to prevent them in the first place. And if you do have a problem, you want a law firm with the management focus and legal experience to see you through to resolution.

BRG&S attorneys have been working with Valley employers for more than 30 years. We help employers manage employment issues, defend claims, stay compliant, and devise strategies for manager and employee training, mergers, and union matters. You can also turn to us for employment contracts, commission agreements, employee handbooks, affirmative action, and more.

Call us today to see what the labor lawyers at BRG&S can do for your company.

Labor Lawyers for Management.

**BALLARD ROSENBERG
GOLPER & SAVITT, LLP**

500 N. Brand Boulevard ■ 20th Floor
Glendale, California 91203
(818) 508-3700 ■ www.brgslaw.com